

# Connecting New

April, 2017

Without death, there can be no resurrection. This month I share a poem about death and a pair of paintings that reveal the new life that will come, even when we are unable to see it. Perhaps even more the poem acknowledges that sometimes the sense of death and suffering overwhelms us, and that although we may judge ourselves for not feeling hopeful, our experience is valid. To claim our truth and live our life is the pathway to the resurrection. Even Jesus felt abandoned while hanging on the cross.

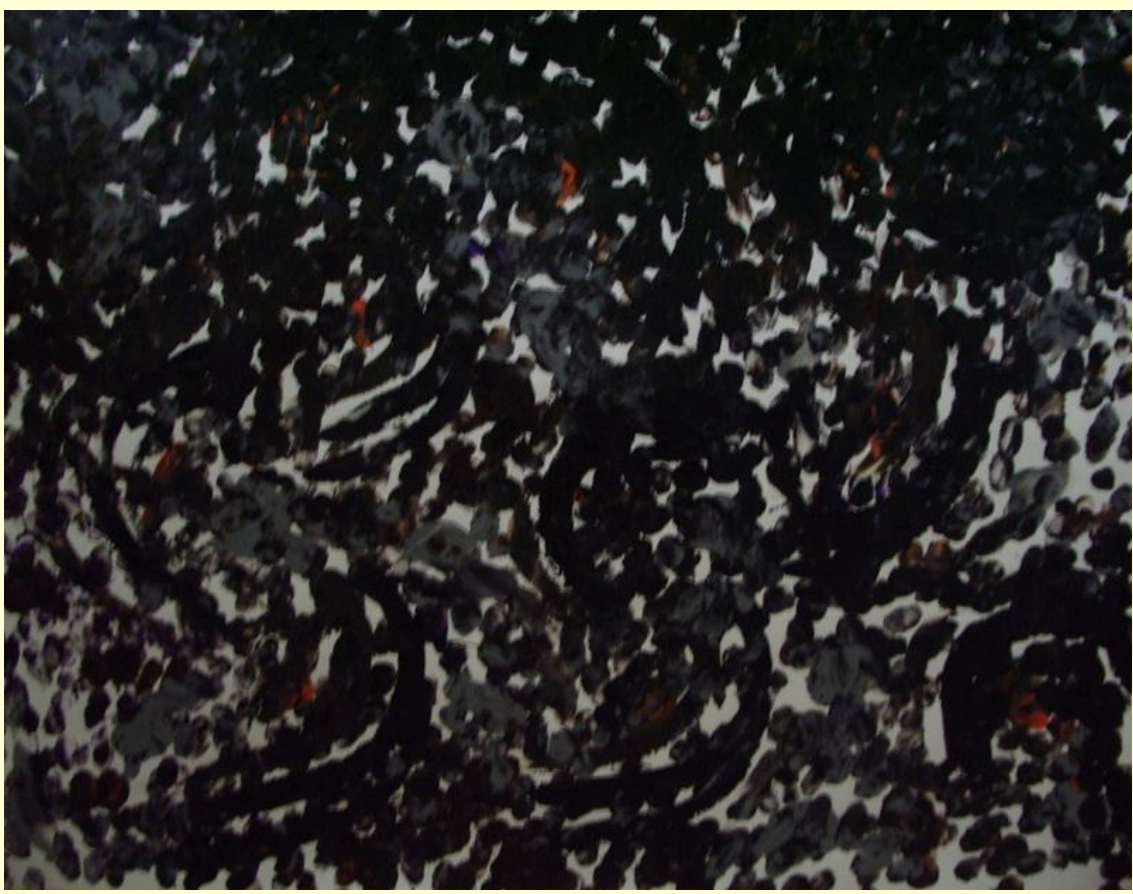
## A Season of Death

A season of death is emerging  
shadowy figures lurking  
the question is not if, but when  
darkness permeates  
even my dog has cancer  
love searches for best expression  
God is here and yet unknown

A season of death is unfolding  
through the people I hold dear  
the principles and principalities  
exponential destruction of our planet  
alienation and errant self-righteousness  
political and apolitical unrest

A season of death is upon us  
unstoppable  
the only way is through  
so may God be with us  
and may we be with God

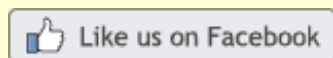
In the first painting I tried to express the sense of this poem, with constantly increasing numbers of deaths (represented by the people immersed in the darkness) becoming apparent the longer we engage with the painting. The second painting is a key to unlocking the first. Out of the darkness emerges a person in orange filled with the Holy Spirit (purple). A resurrected person with new life, hope and freedom. These persons also appear in the first painting, but are significantly masked by the sense of loss and suffering associated with death.





May all of us enter more fully into the promise of resurrection this Easter Season.

Peace and Blessings,  
Clarence



Clarence Heller is a spiritual director, poet, and dreamer whose writing and paintings are inspired through prayerful reflection.

Contact: [clarence@clarenceheller.com](mailto:clarence@clarenceheller.com)



To order copies of *Everyday Sacred: Meditations and Paintings to Inspire Reflection and Prayer*, learn more about Celebrating the Sacredness of Everyday Life Events and much more, visit [www.clarenceheller.com](http://www.clarenceheller.com).

If this has been forwarded to you and you would like to receive future editions of *Connecting New*, you may register at [www.clarenceheller.com](http://www.clarenceheller.com).

You are receiving this email because our paths have crossed at some time.  
Our mailing address is:  
Connecting New

 Forward to a Friend